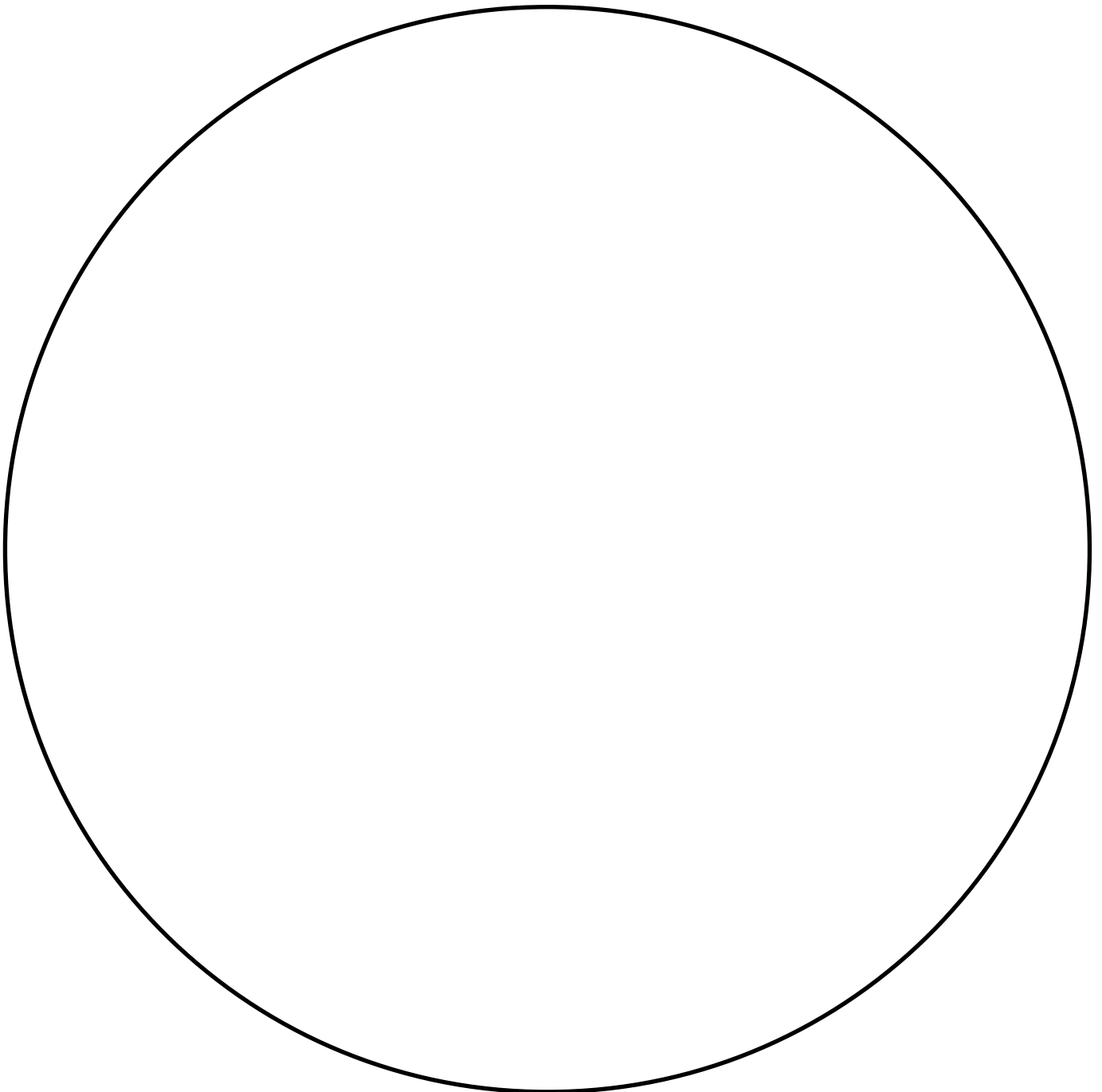
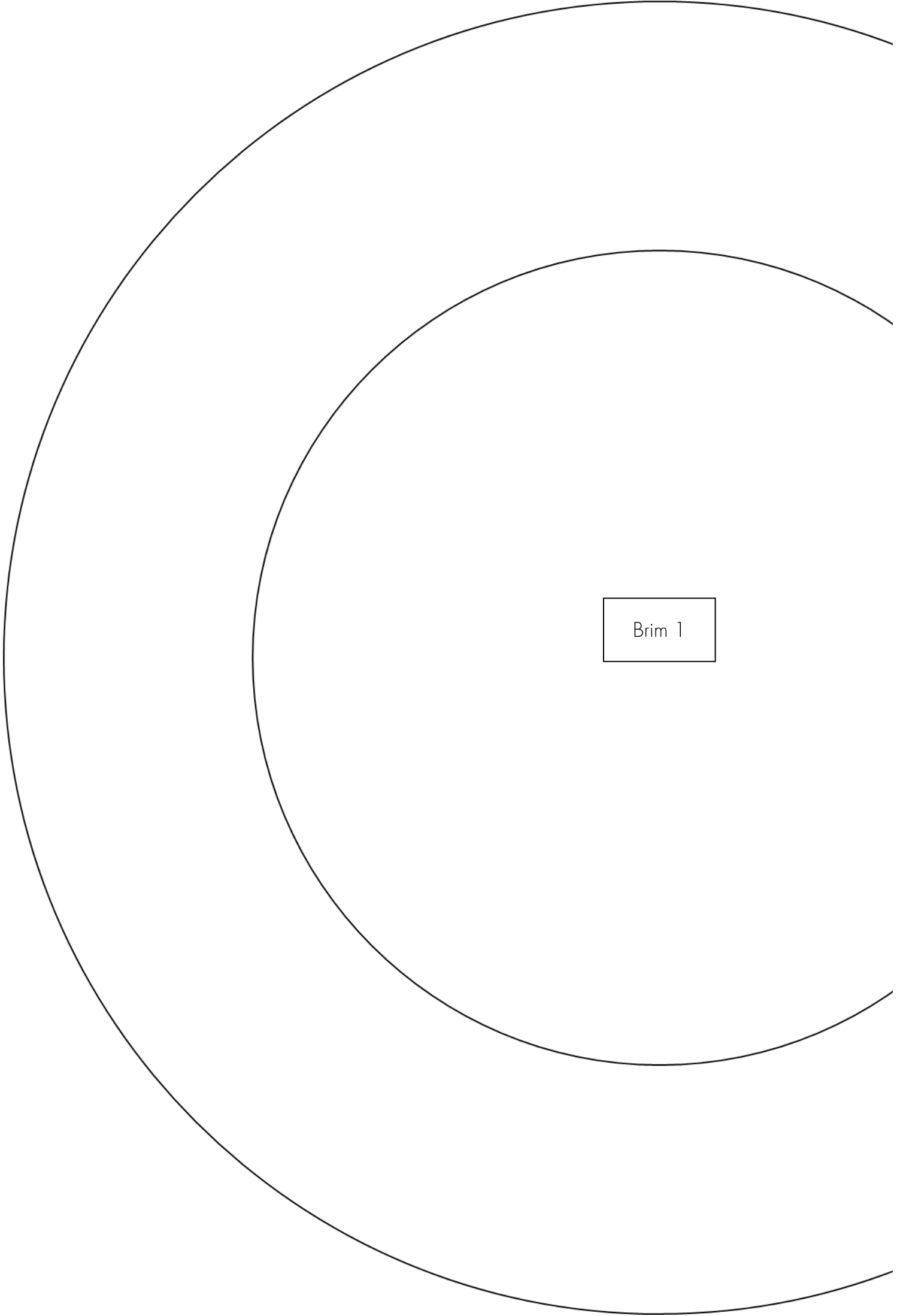


- Print both pages.
- Cut out the top circle, two brim halves and rectangles.
- Fold along the dotted lines on the rectangles and cut out the notches so the points face outwards.
- Overlap brim halves to create a circle.
- Decorate!
- The rectangles will become the sides of your hat, by overlapping the edges into a loop.
- When you've finished, use the notches to stick your brim and your top to the rectangles.

Top





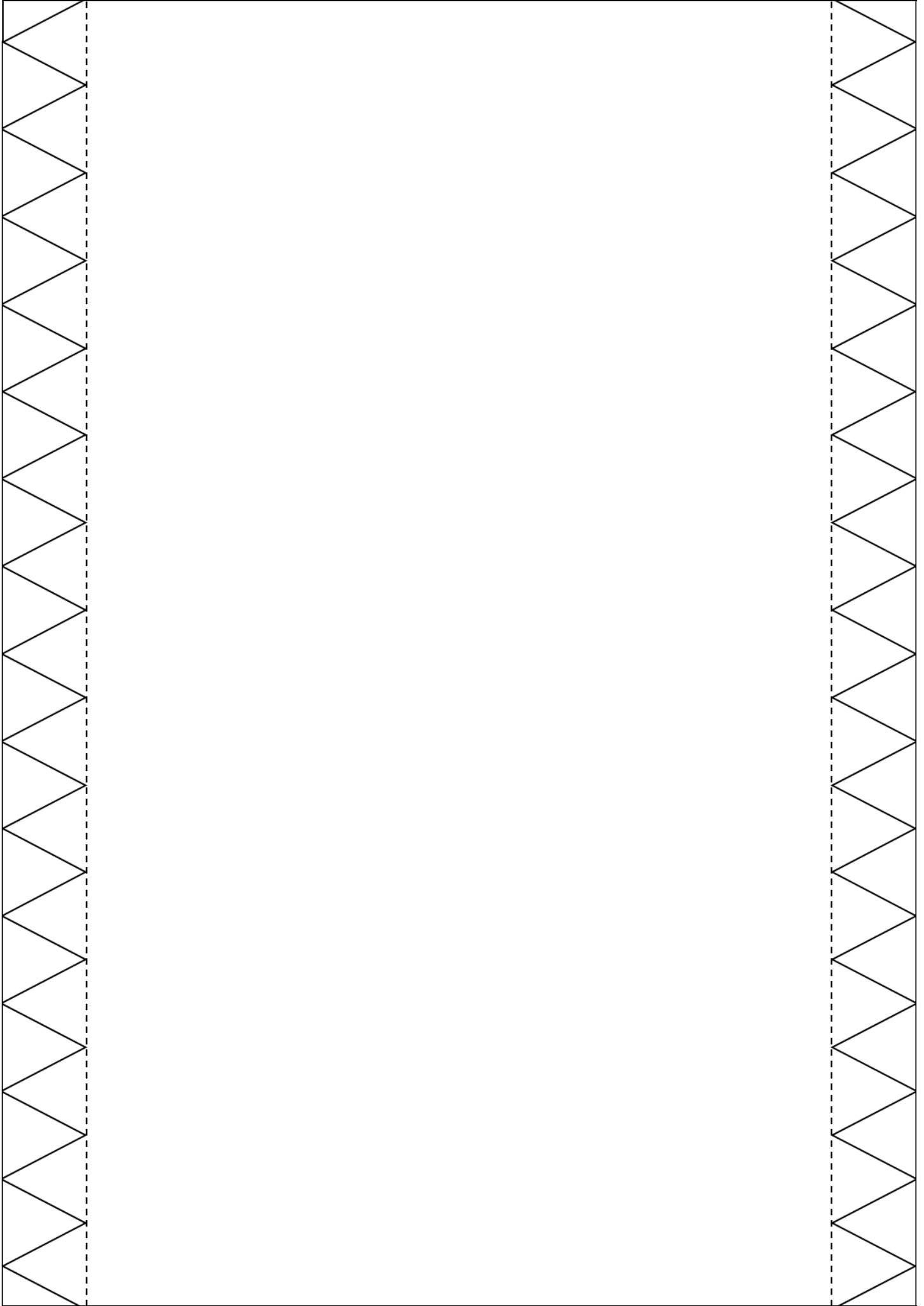
Brim 1



Brim 2

Overlap with other strip

Overlap with other strip



Overlap with other strip

Overlap with other strip

